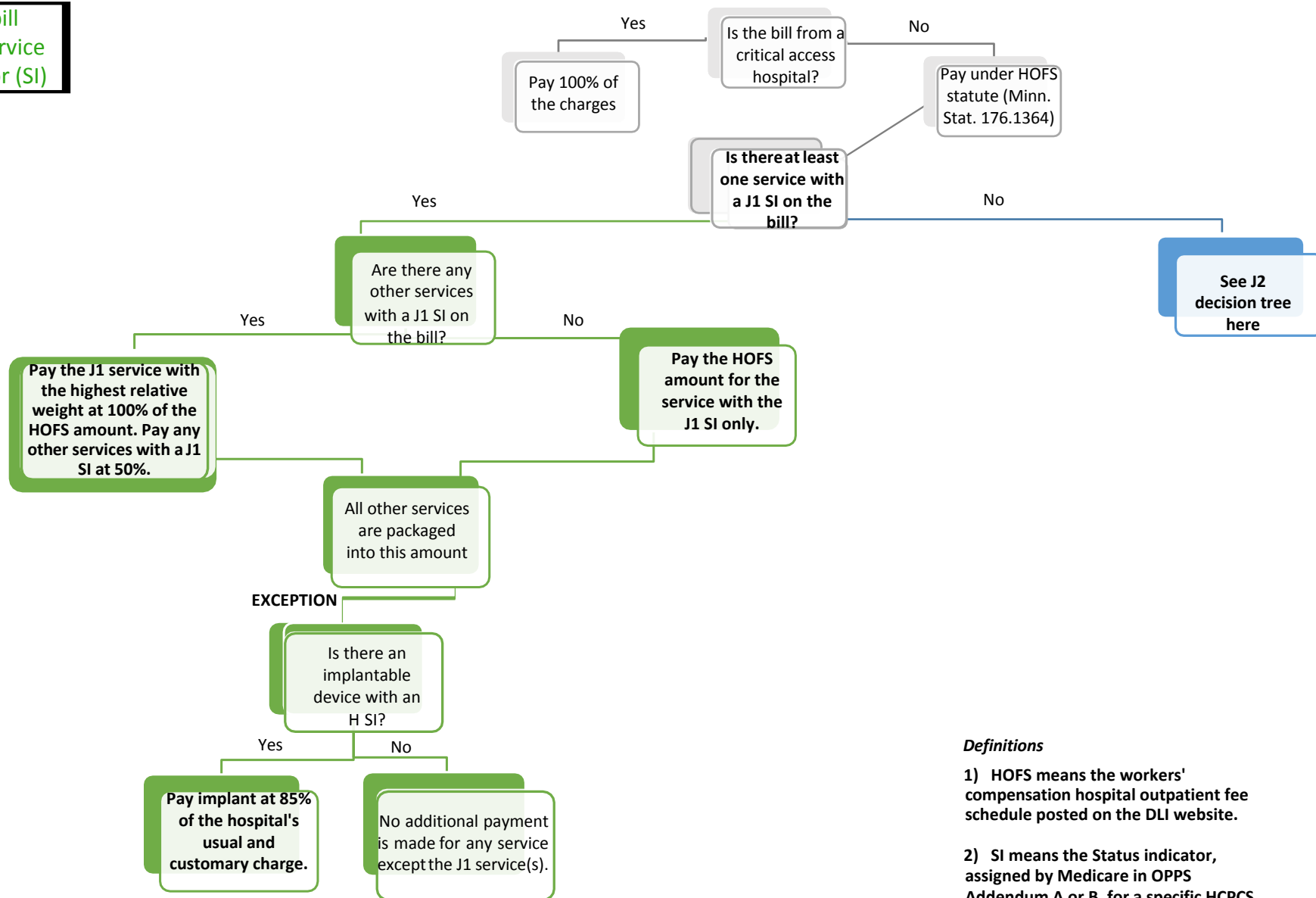


Use this table if the bill contains at least one service with a **J1** status indicator (SI)



**Definitions**

- 1) HOFS means the workers' compensation hospital outpatient fee schedule posted on the DLI website.
- 2) SI means the Status indicator, assigned by Medicare in OPPS Addendum A or B, for a specific HCPCS code.

In developing this flowchart, the Department of Labor and Industry has made every effort to accurately reflect the requirements codified in Minnesota Statutes § 176.1364. The statutory language controls in the event of a difference between these instructions and the statute.