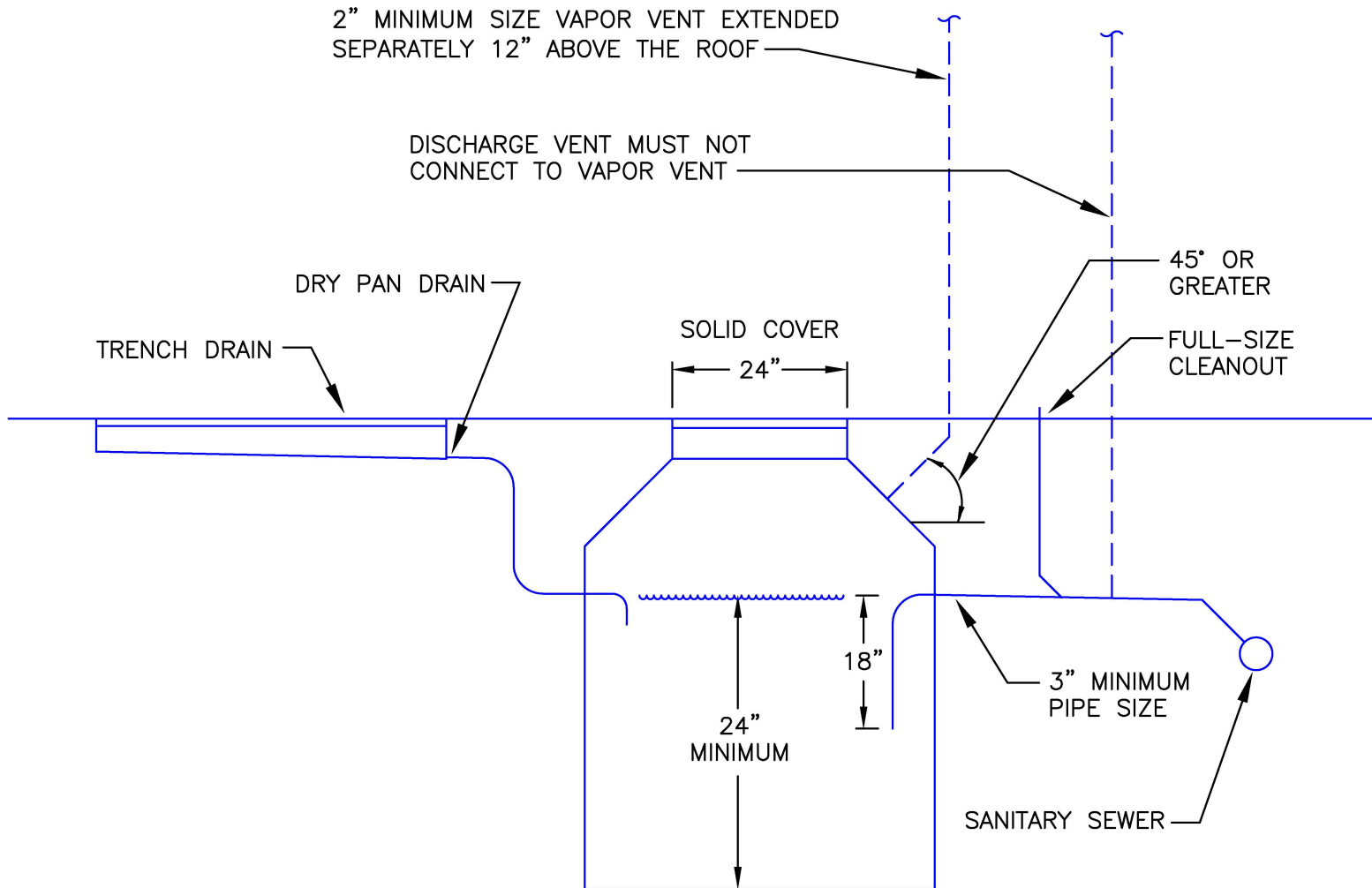


MINNESOTA RULES, CHAPTER 4714, SECTIONS 1009.1 AND 1017.0



STORAGE AREA:

WHERE UP TO 3 MOTOR VEHICLES ARE STORED, THE INTERCEPTOR MUST HAVE A MINIMUM CAPACITY OF 6 CUBIC FEET. 1 CUBIC FOOT OF CAPACITY MUST BE ADDED FOR EACH VEHICLE UP TO 10 VEHICLES. FOR MORE THAN 10 VEHICLES, THE AUTHORITY HAVING JURISDICTION MUST DETERMINE THE SIZE OF THE INTERCEPTOR REQUIRED.

SERVICE AREA:

WHERE VEHICLES ARE SERVICED, THE INTERCEPTOR MUST BE SIZED USING A NET CAPACITY OF 1 CUBIC FOOT FOR EACH 100 SQUARE FEET OF SURFACE TO BE DRAINED INTO THE INTERCEPTOR, WITH A MINIMUM OF 6 CUBIC FEET.