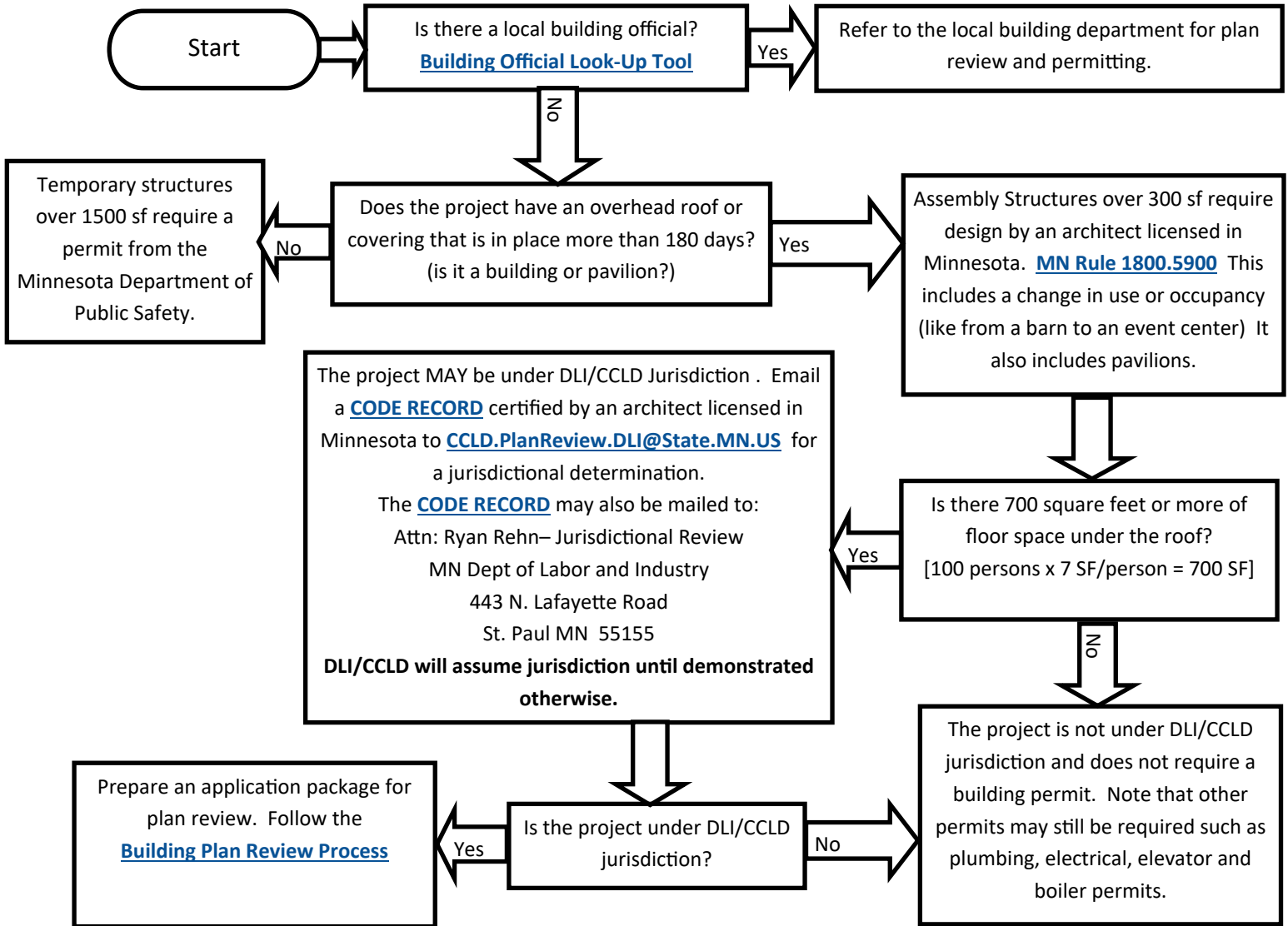


Places of Public Accommodation– Review Process Flow Chart



Helpful Information

- Event centers are NOT agricultural buildings. A change in occupancy from an agricultural building to an event center is deemed an increase in fire/life safety risk and requires compliance with the current building code structural requirements. If the event center is found to be under DLI/CCLD jurisdiction, then structural calculations must be prepared and submitted for review.
- Event Centers must coordinate with the Minnesota Department of Public Safety/ State Fire Marshal’s Division to determine fire protection requirements.
- Permanent toileting facilities are required to accommodate the entire occupant load.
- Separate plan review and permitting is required for all plumbing work.
- Unconditioned spaces that are altered to provide heating and cooling must comply with the current Minnesota Energy Code and Minnesota Mechanical Code.
- Event centers and all public spaces within them which are over 450 square feet (30 people x 15 SF per person) shall be accessible to persons with disabilities. This includes accessible parking as well as accessible routes to all interior and exterior spaces open to the public.
- Places of Public Accommodation do not require fire sprinkler systems until the occupant load is 300 or more persons, as determined by the Architect and verified by the Building Official.